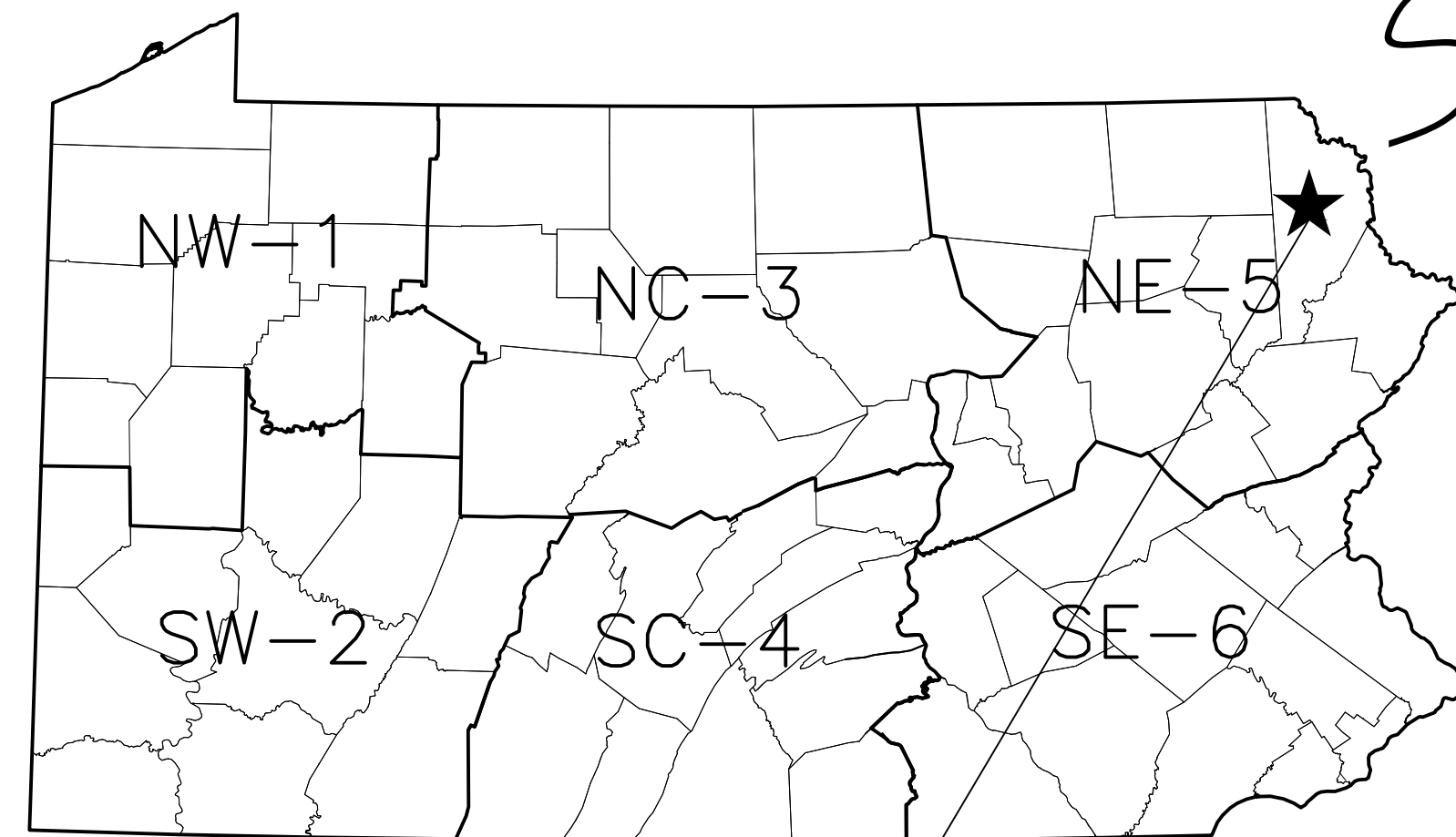


# PENNSYLVANIA GAME COMMISSION

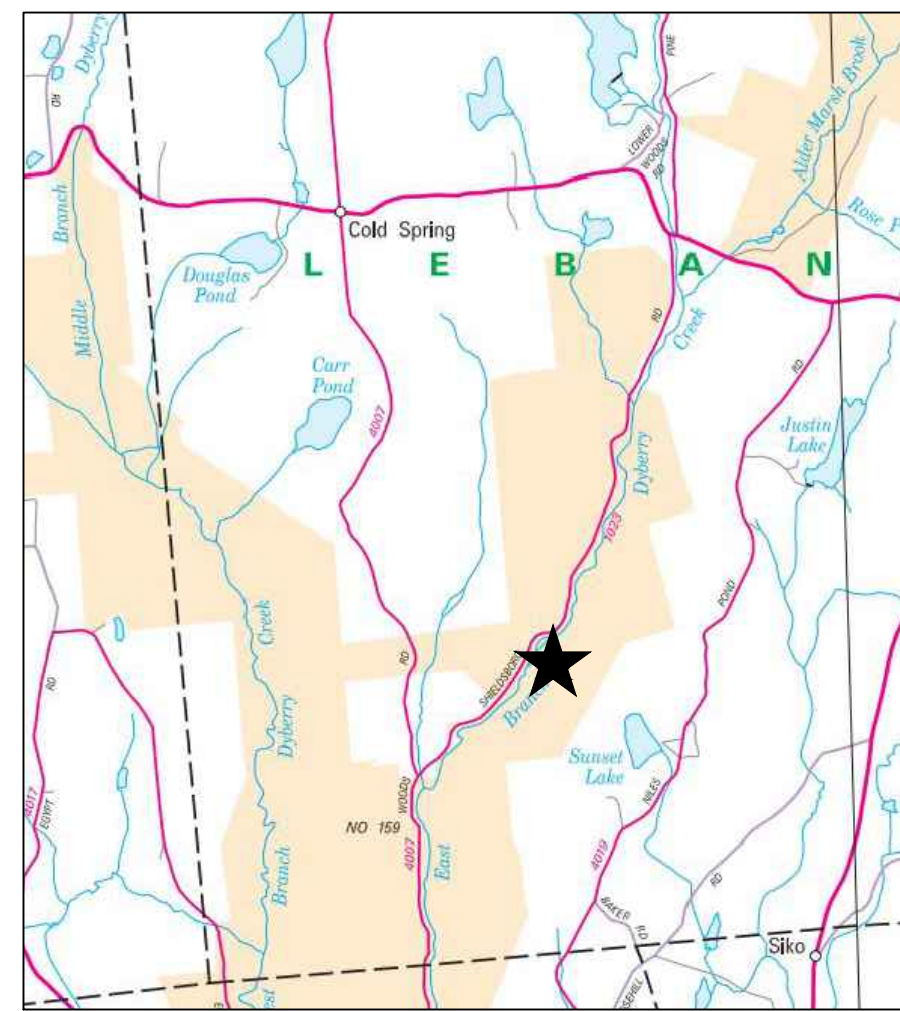
## SGL NO. 159

### SHOOTING RANGE IMPROVEMENTS



PROJECT LOCATION

LEBANON TOWNSHIP, WAYNE COUNTY  
DECEMBER 2022



★ = GEO N41.695943° / -75.280239°W  
SITE LOCATION  
NO SCALE

GENERAL NOTES:

1. THIS PROJECT IS LOCATED ON STATE GAME LAND (SGL) #159 IN LEBANON TOWNSHIP, WAYNE COUNTY. THE SITE IS LOCATED ON SHIELDSBORO ROAD, DYBERRY PA. THE SITE AND ADJACENT PROPERTY IS OWNED BY THE PA GAME COMMISSION (PGC).
2. WORK HOURS SHALL BE DURING NORMAL PGC BUSINESS HOURS MONDAY-FRIDAY, 7:45 AM TO 4:00 PM EST. DIFFERENT WORK HOURS MUST HAVE PRIOR WRITTEN APPROVAL BY THE PGC. REQUESTS FOR DIFFERENT HOURS MUST BE SUBMITTED AT LEAST TWO BUSINESS DAYS IN ADVANCE.
3. THE EXISTING STABILIZED ACCESS DRIVE AND ADJOINING PARKING LOTS OFF OF SHIELDSBORO ROAD IS TO SERVE AS ACCESS AND STAGING AREAS FOR THE PROJECT.
4. THE SHOOTING RANGE WILL BE CLOSED DURING CONSTRUCTION ACTIVITIES. THE CONTRACTOR SHALL FURNISH AND INSTALL ANY NEEDED SIGNS, BARRICADES, WARNING TAPES, ETC. TO PROTECT AND PROHIBIT ACCESS TO THE PROJECT AREA DURING CONSTRUCTION. THE PGC SHALL POST "RANGE CLOSED" SIGNS ALONG THE ACCESS DRIVE LEADING TO THE SITE ALONG SAMPSON ROAD.
5. THE CONTRACTOR SHALL REMOVE EXISTING PGC SIGNAGE PRIOR TO CONSTRUCTION AND WILL REINSTALL THE SIGNS AFTER WORK IS COMPLETE.
6. NUMBERS ON THE AERIAL MAP REFER TO CONSTRUCTION NOTES WITHIN THIS PLAN SET.
7. SHELTERS SHOULD BE ALIGNED CORRESPONDING TO THE TARGETS DOWN RANGE. PGC STAFF WILL FINALIZE LAYOUT OF SHELTERS AND SPACING PRIOR TO PROCEEDING WITH FURTHER CONSTRUCTION.
8. REMOVE AND PROPERLY DISPOSE OF ALL CONSTRUCTION DEBRIS.
9. RESTORE ANY DISTURBED VEGETATED AREAS WITH 4" OF TOP SOIL, SEED AND MULCH



PHOTOGRAPH OF EXISTING PISTOL RANGE  
NO SCALE



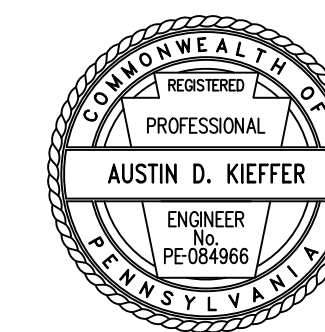
PHOTOGRAPH OF EXISTING 50 YD BACK STOP  
NO SCALE



PHOTOGRAPH OF EXISTING 100 YD BACK STOP  
NO SCALE

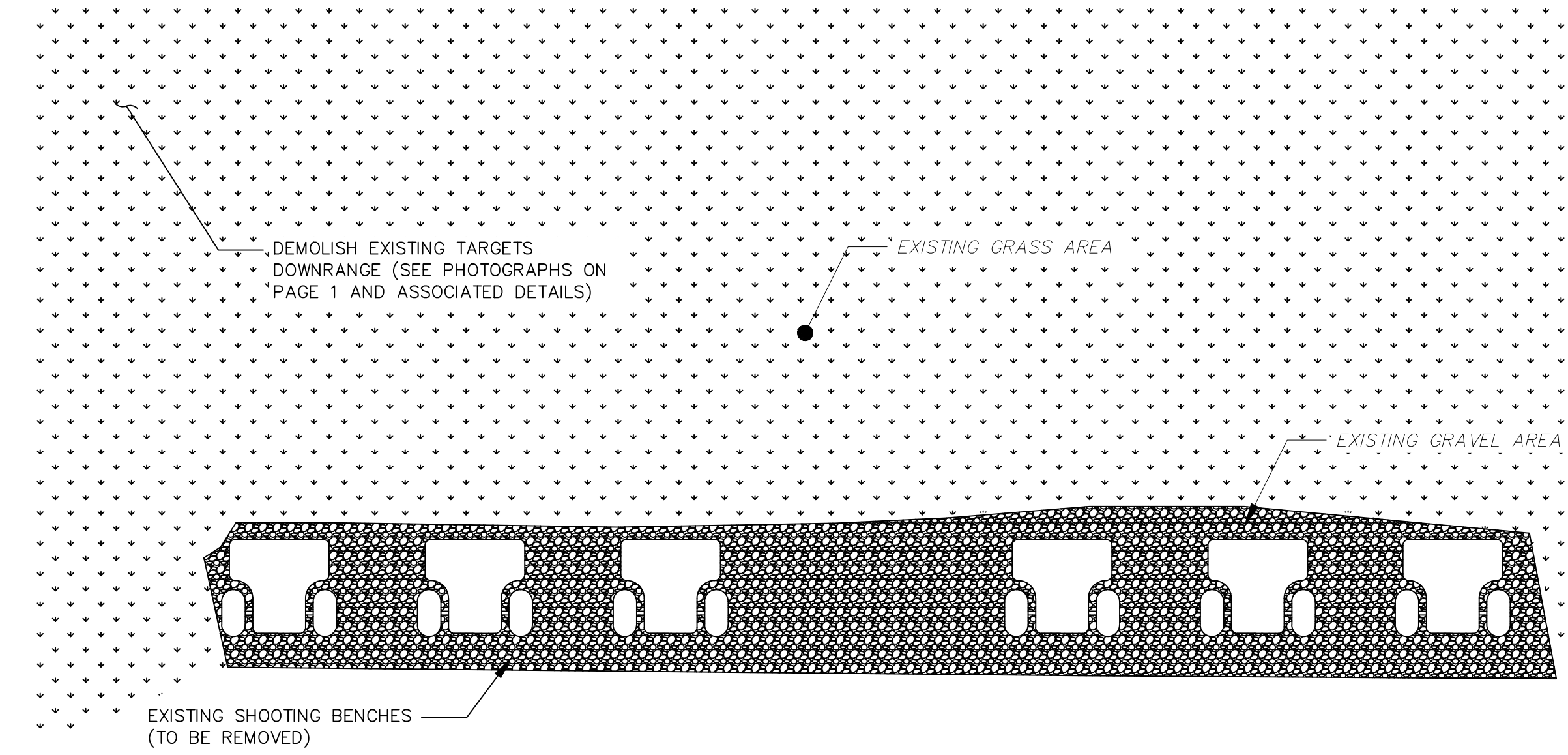
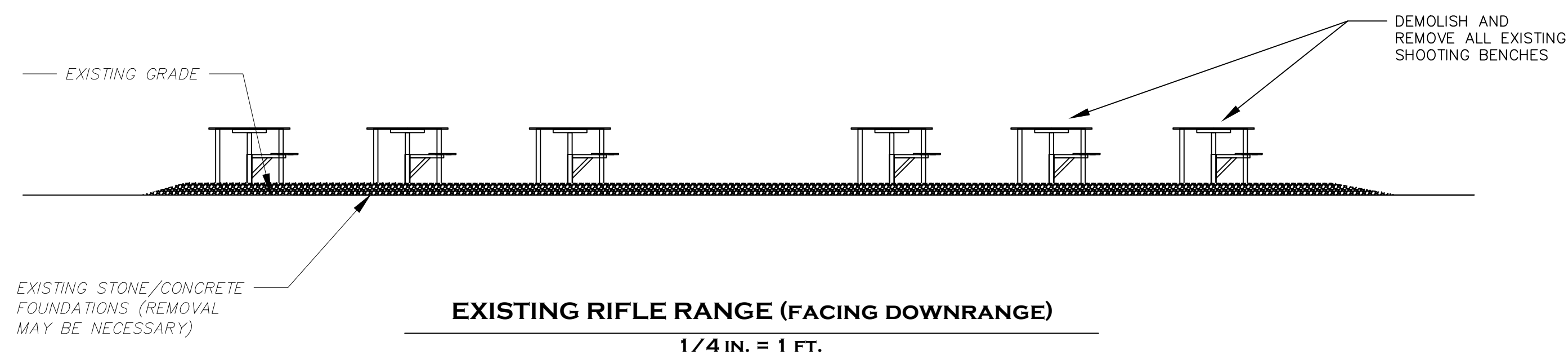


PHOTOGRAPH OF EXISTING SHOOTING BENCHES  
NO SCALE

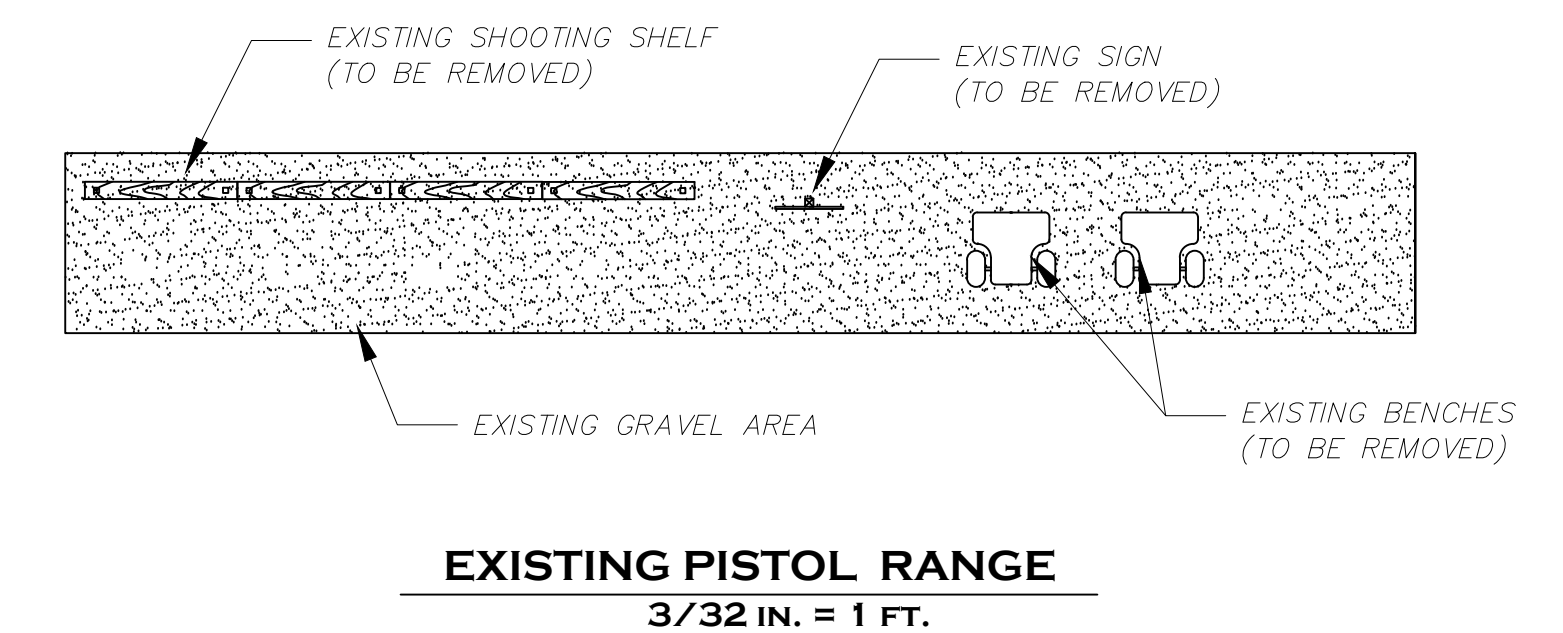
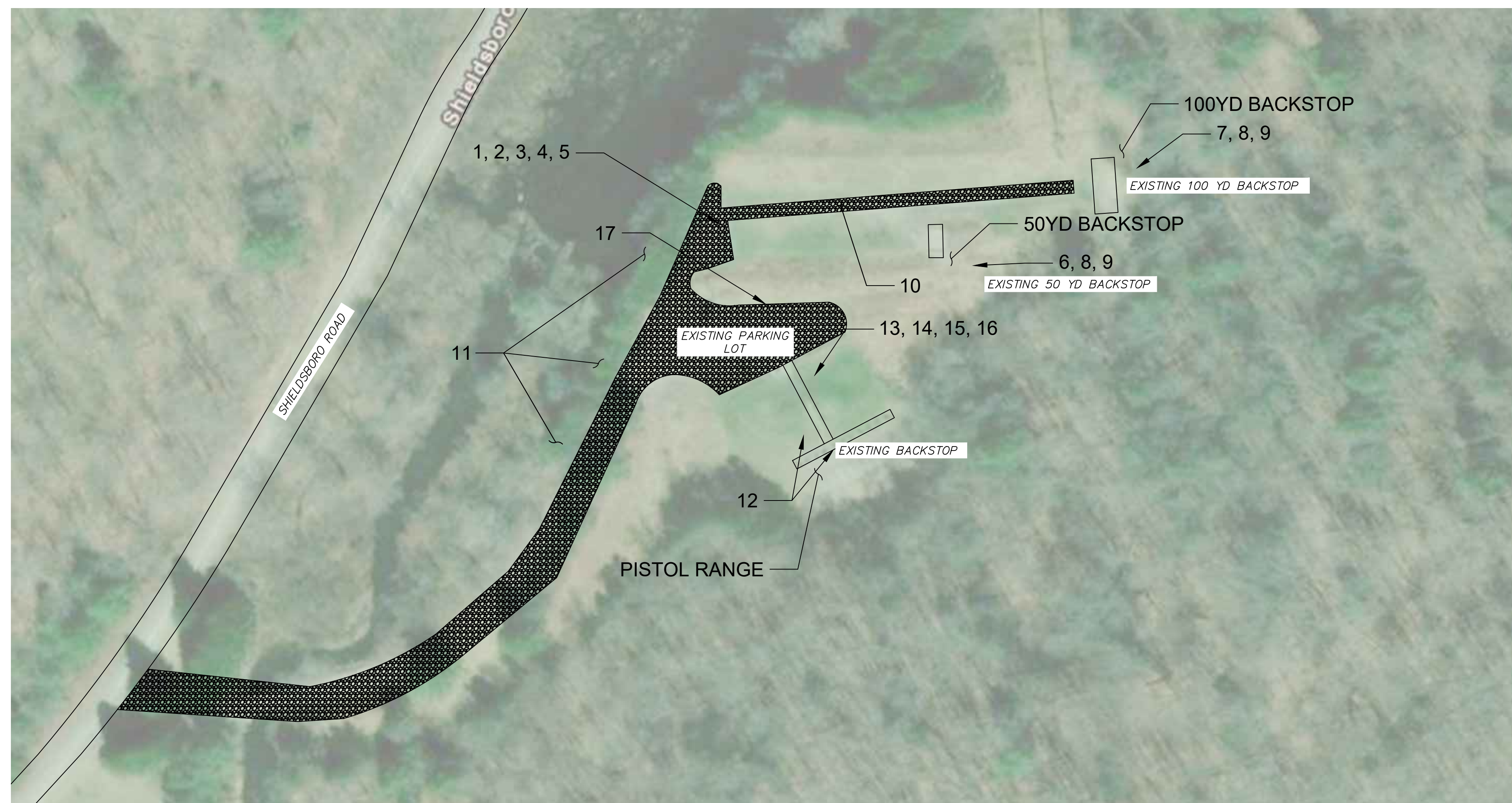


PENNSYLVANIA GAME COMMISSION		
STATE GAME LANDS #159	LEBANON TWP	WAYNE CO.
SHOOTING RANGE IMPROVEMENTS		
COVER PAGE		
REVISIONS	PROJECT NO.	PGC-159-22-1
▲	DRAWN BY:	ACL
▲	DATE:	12/08/2022
▲	SHEET NO.	1 OF 5





**EXISTING RIFLE RANGE**  
3/16 IN. = 1 FT.

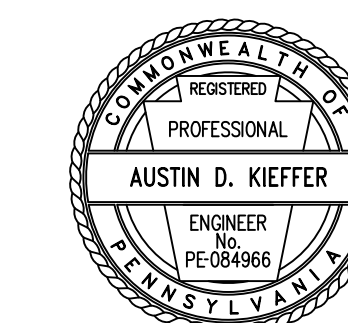


SHOOTING RANGE IMPROVEMENT CONSTRUCTION TASKS:

RIFLE RANGE (1-11) PISTOL RANGE (12-17):

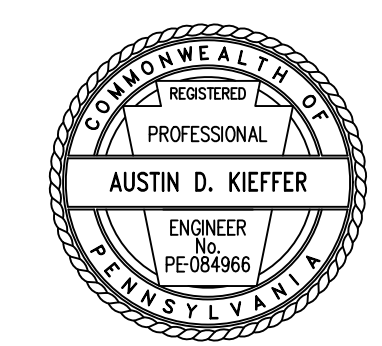
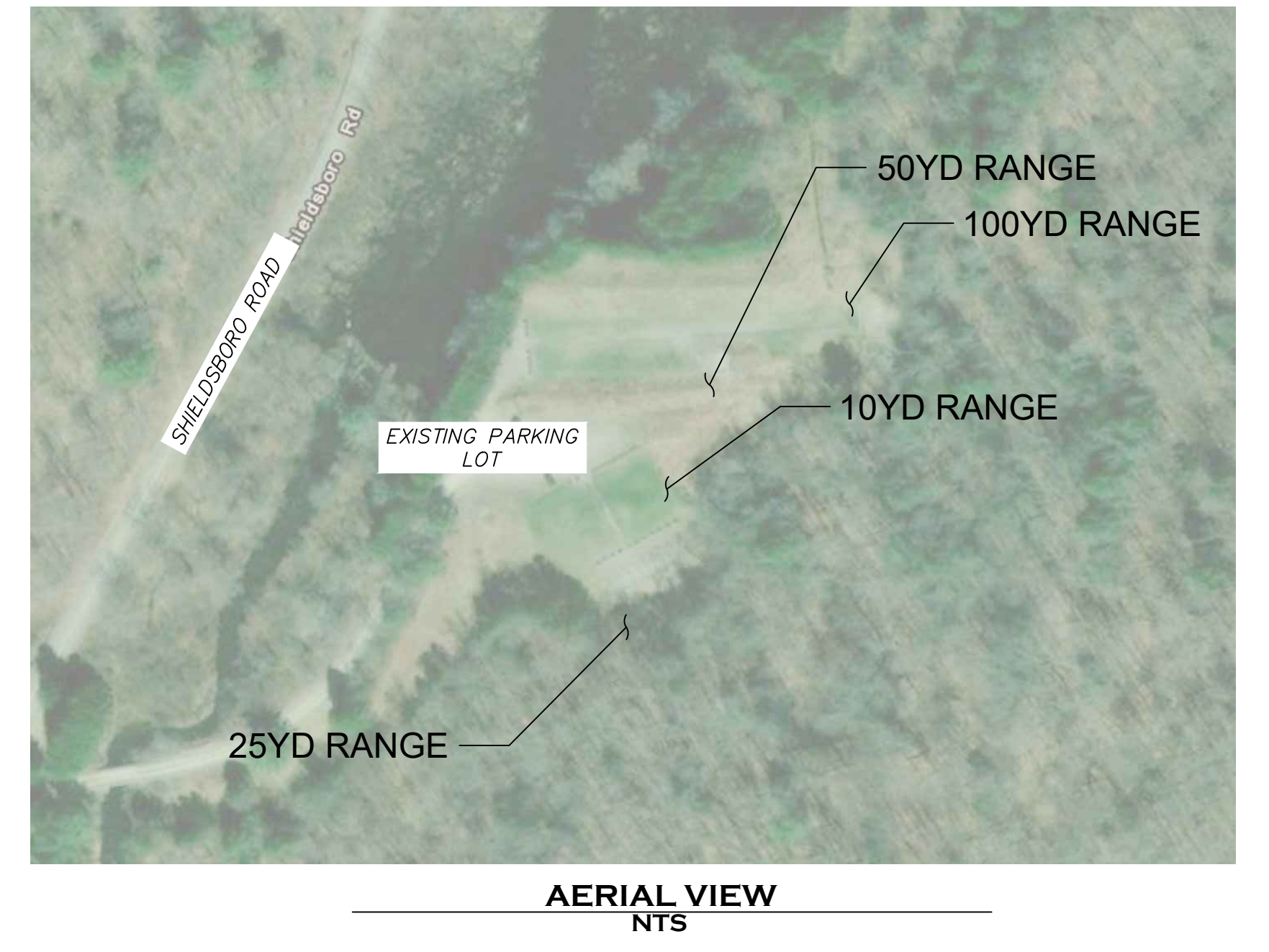
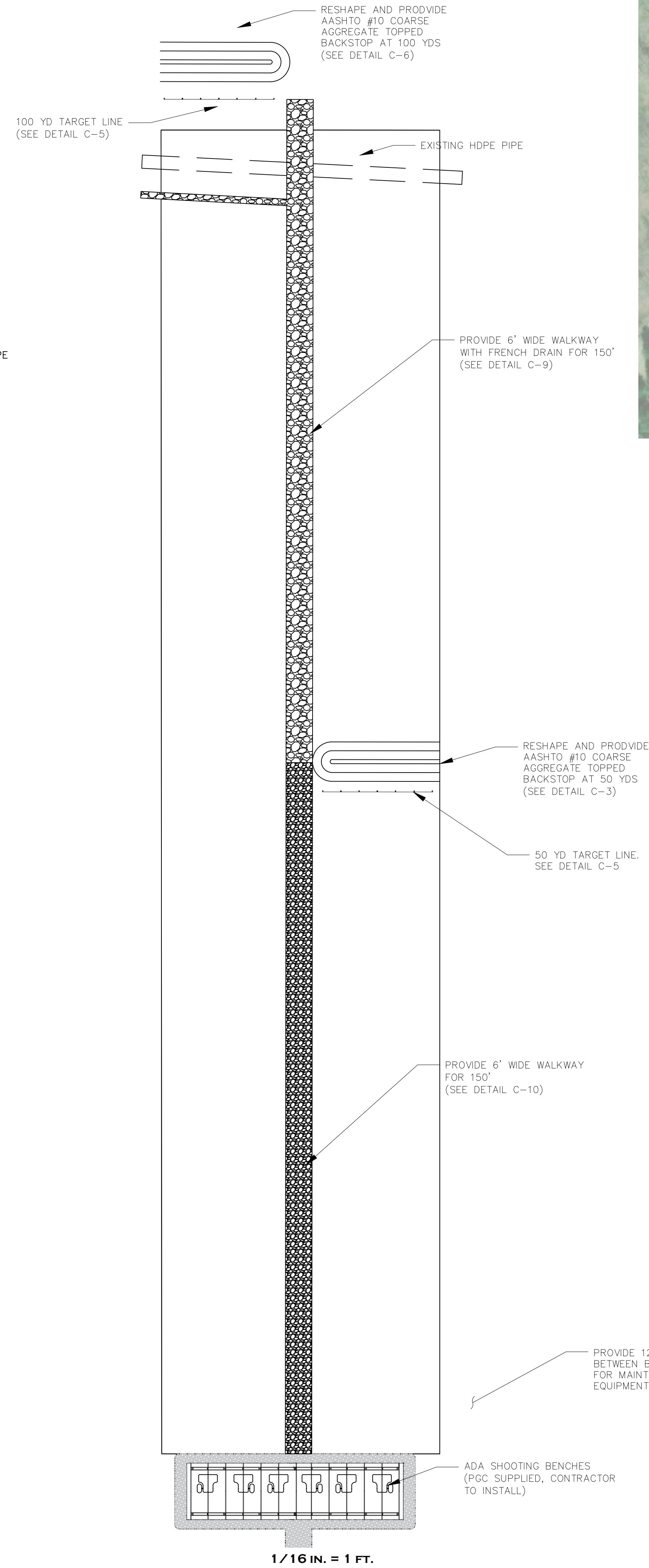
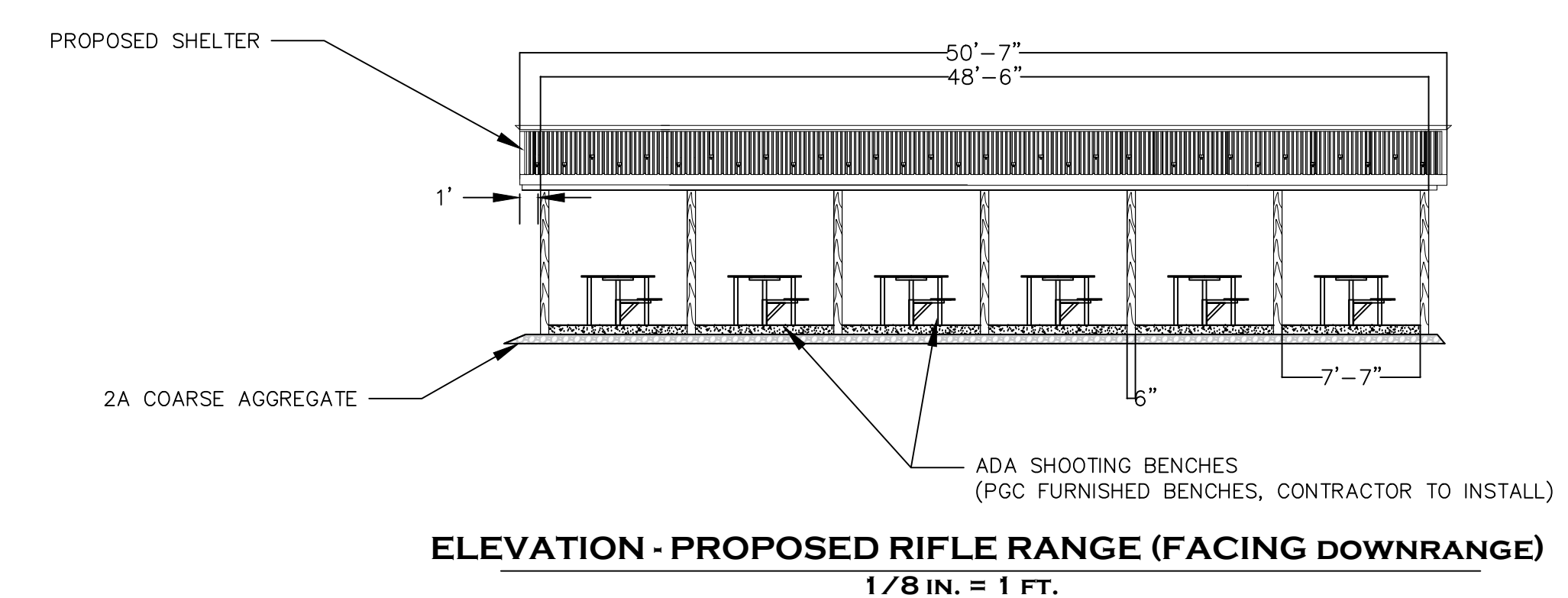
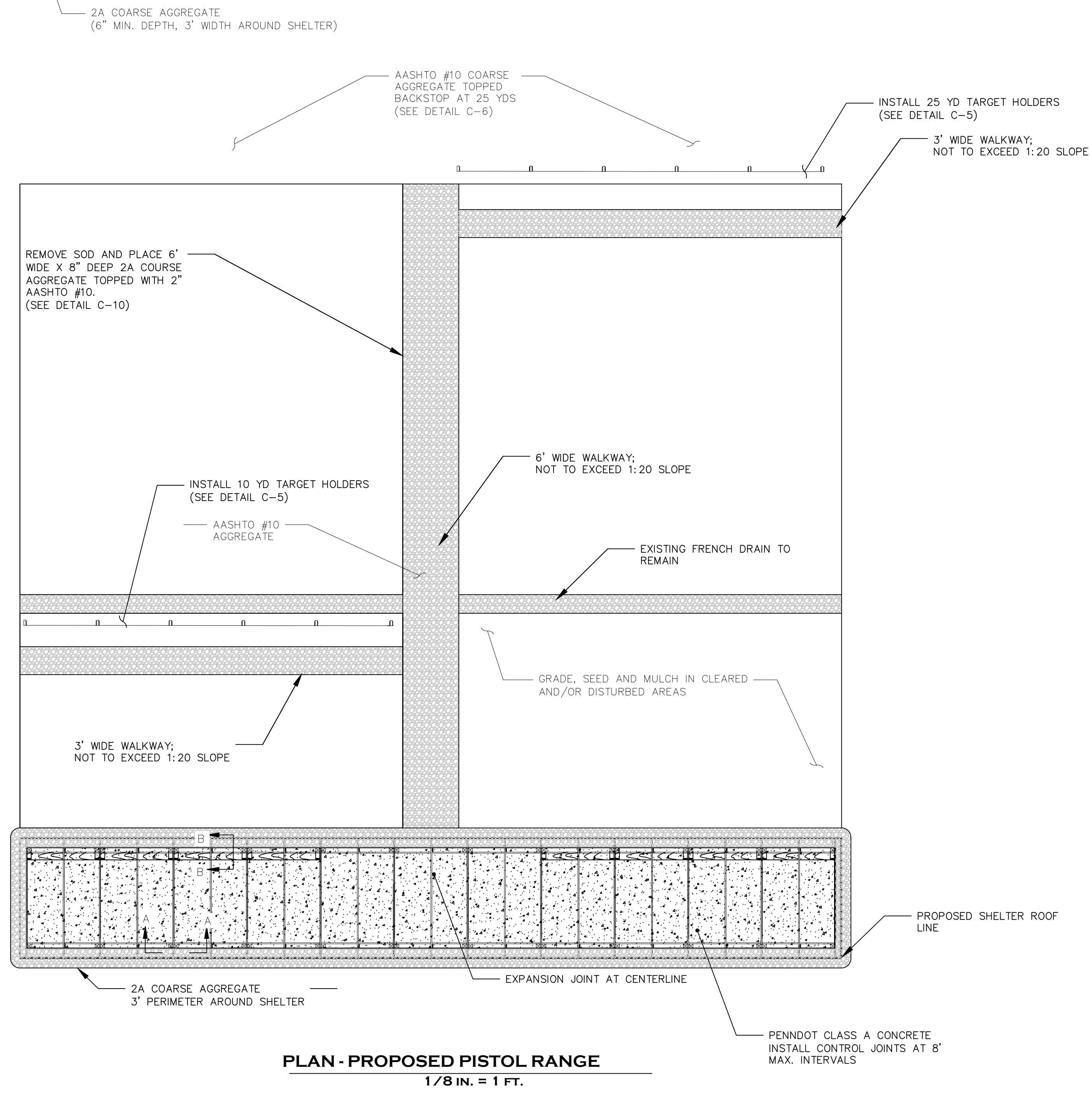
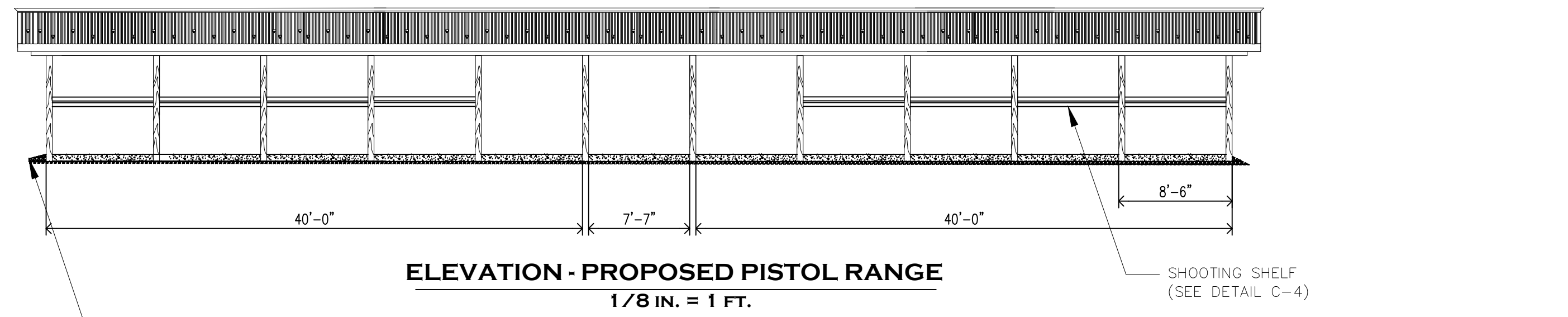
1. DEMOLISH EXISTING SHOOTING BENCHES.
2. PROVIDE ONE SHOOTING RANGE SHELTER.
3. PROVIDE CONCRETE PAD BELOW SHELTER.
4. PROVIDE 2A COARSE AGGREGATE AS SUBBASE UNDER PAD, ALONG PROPOSED PAD AND ACCESS DRIVE (SEE DRAWINGS FOR DETAILS AND LOCATIONS).
5. INSTALL SIX (6) SHOOTING BENCHES (PGC SUPPLIED, CONTRACTOR TO INSTALL).
6. REHABILITATE BACKSTOP FOR THREE (3) BAYS AT 50 YARDS.
7. REHABILITATE BACKSTOP FOR THREE (3) BAYS AT 100 YARDS.
8. DEMOLISH EXISTING TARGET HOLDERS AND PROVIDE NEW TARGET HOLDERS.
9. PROVIDE AASHTO #10 ON BACKSTOPS UPON SATISFACTORY COMPACTION AND SLOPES ARE MET.
10. PROVIDE 2A COARSE AGGREGATE AND AASHTO #10 FRENCH DRAIN; EXTEND TO 100 YD TARGET.
11. REMOVE EIGHTEEN (18) SPRUCE TREES AND GRIND STUMPS ALONG STREAM BANK (VOLUME - VARIOUS UNDERGROWTH AND EIGHTEEN TREES 12"-18" STUMP DIAMETER).
- 11.1. SEED AND STABILIZE AREA WHERE TREES ARE REMOVED.

12. PROVIDE AASHTO #10 WALKWAY FOR PISTOL BAYS AND PROVIDE ADDITIONAL AASHTO ON BACKSTOP.
13. INSTALL (2) PISTOL SHELVES.
14. FIVE (5) BAYS TO BE DESIGNATED FOR 10 YD RANGE.
15. FIVE (5) BAYS TO BE DESIGNATED FOR 25 YD RANGE.
16. ONE (1) ADA BAY PER PISTOL SHELF (SEE DETAILS).
17. PROVIDE ONE (1) ADA PARKING SPACE WITHIN EXISTING PARKING LOT.



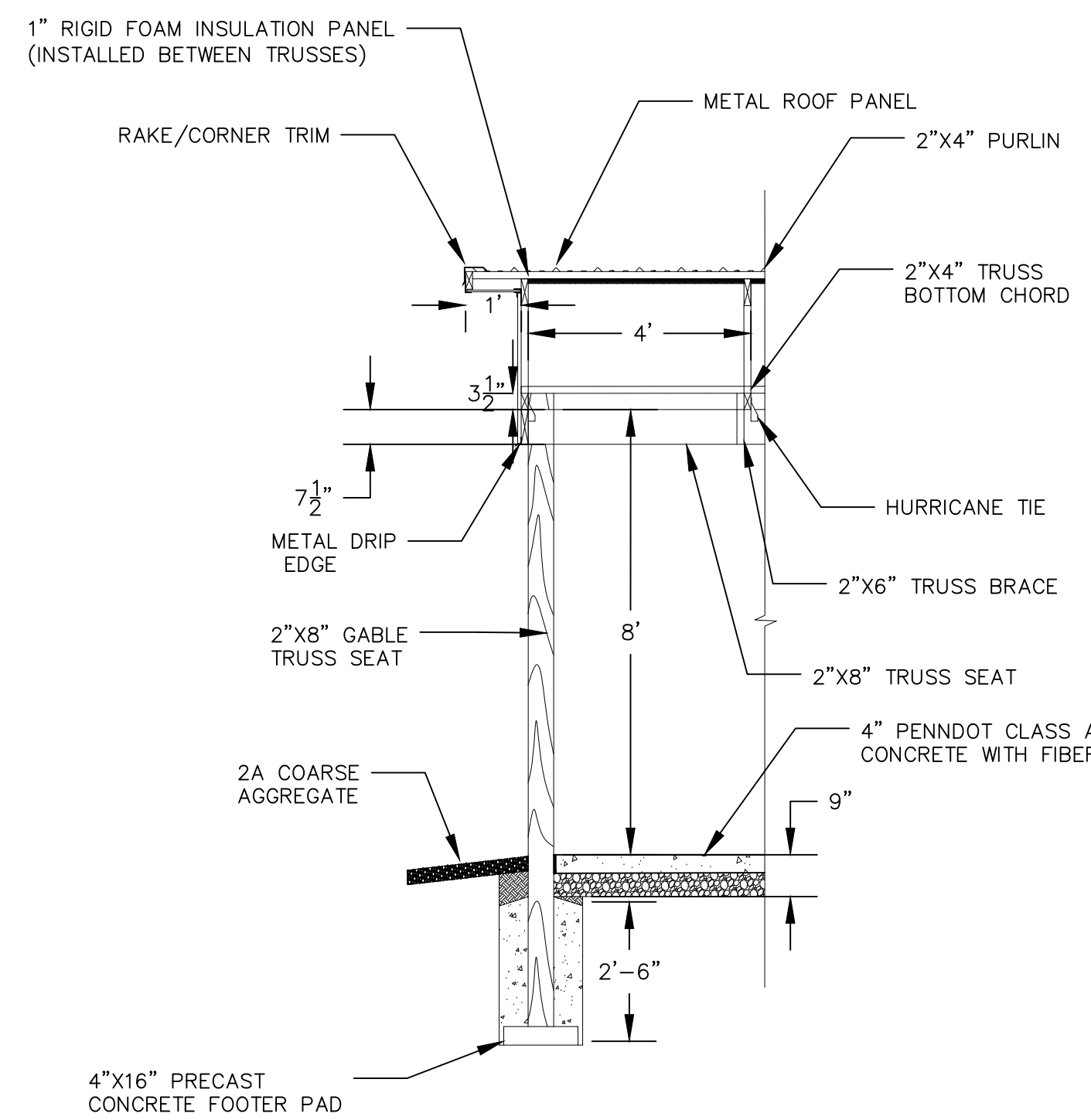
PENNSYLVANIA GAME COMMISSION		
STATE GAME LANDS #159	LEBANON TWP	WAYNE CO.
SHOOTING RANGE IMPROVEMENTS		
EXISTING CONDITIONS & DEMOLITION PLAN		
REVISIONS	PROJECT NO.	PGC-159-22-1
▲	DRAWN BY:	AGL
▲	DATE:	12/08/2022
▲	SHEET NO.	2 OF 5



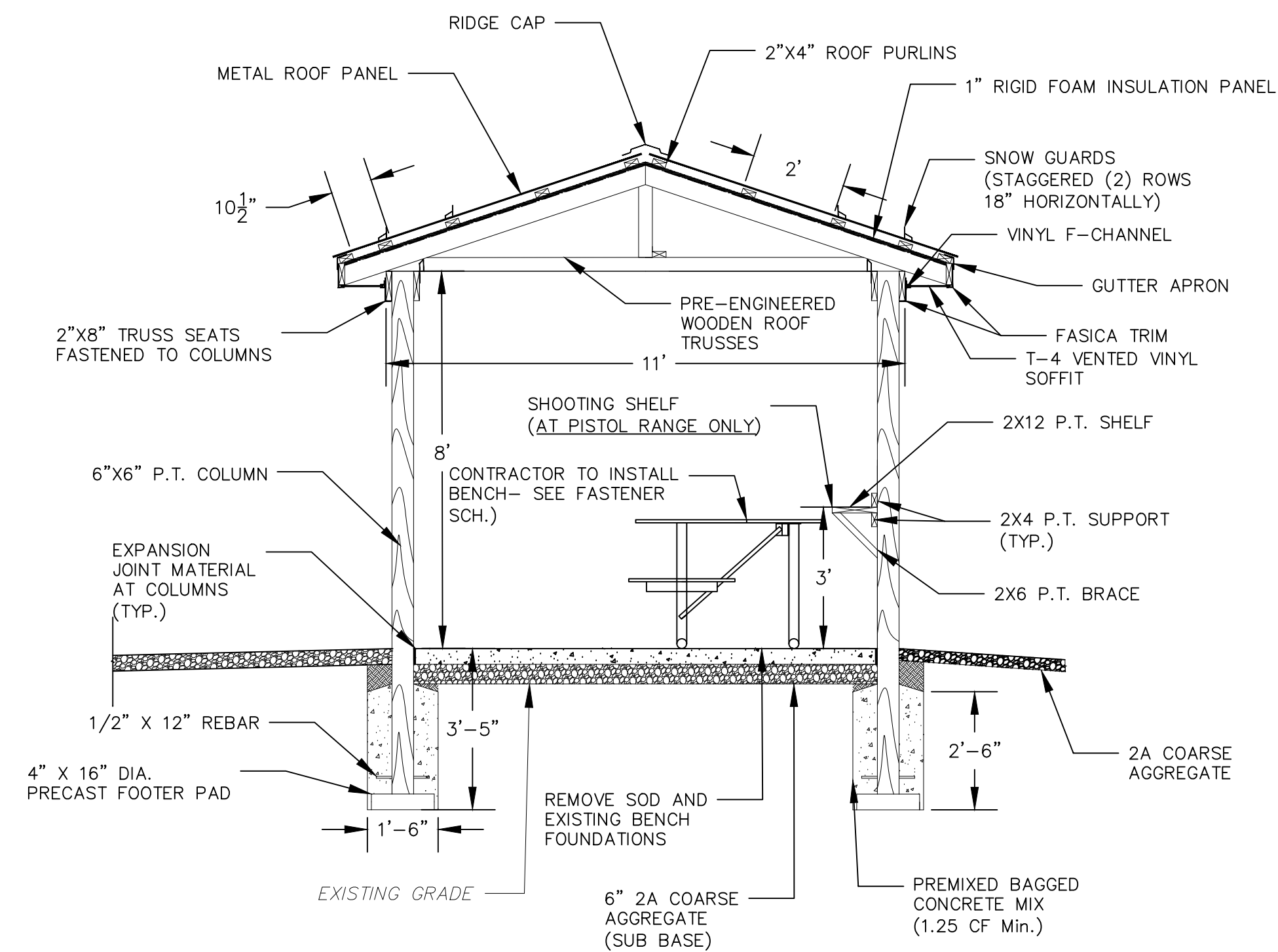


PENNSYLVANIA GAME COMMISSION		
STATE GAME LANDS #159	LEBANON TWP	WAYNE CO.
SHOOTING RANGE IMPROVEMENTS		
PROPOSED CONDITIONS		
REVISIONS	PROJECT NO.	PGC-159-22-1
▲	DRAWN BY:	ACL
▲	DATE:	12/08/2022
▲	SHEET NO.	3 OF 5





**C-1 SECTION A-A TYPICAL SHELTER GABLE DETAIL**  
3/8 IN. = 1 FT.

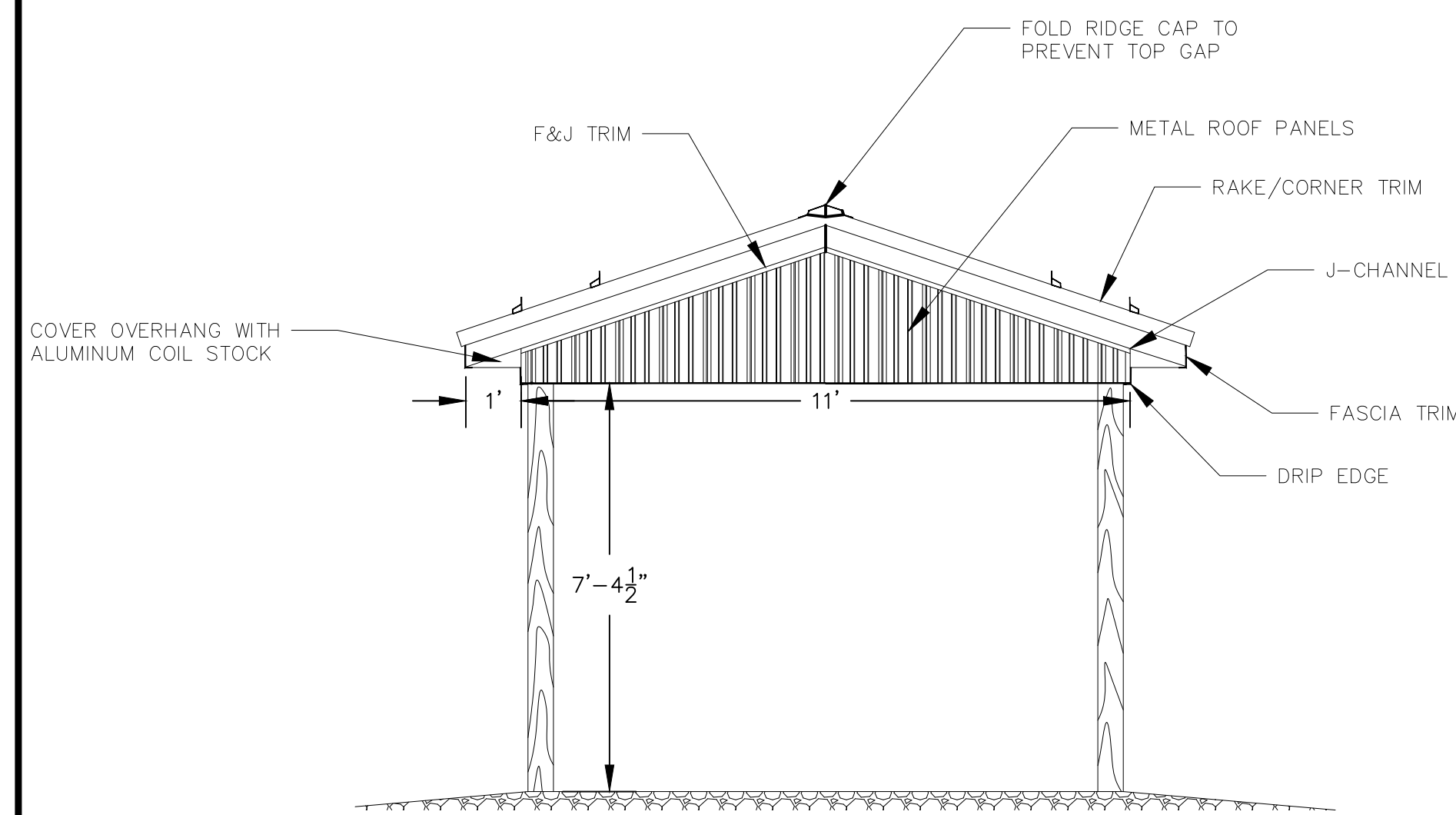


**C-4 SECTION B-B TYPICAL SHELTER DETAIL**  
3/8 IN. = 1 FT.

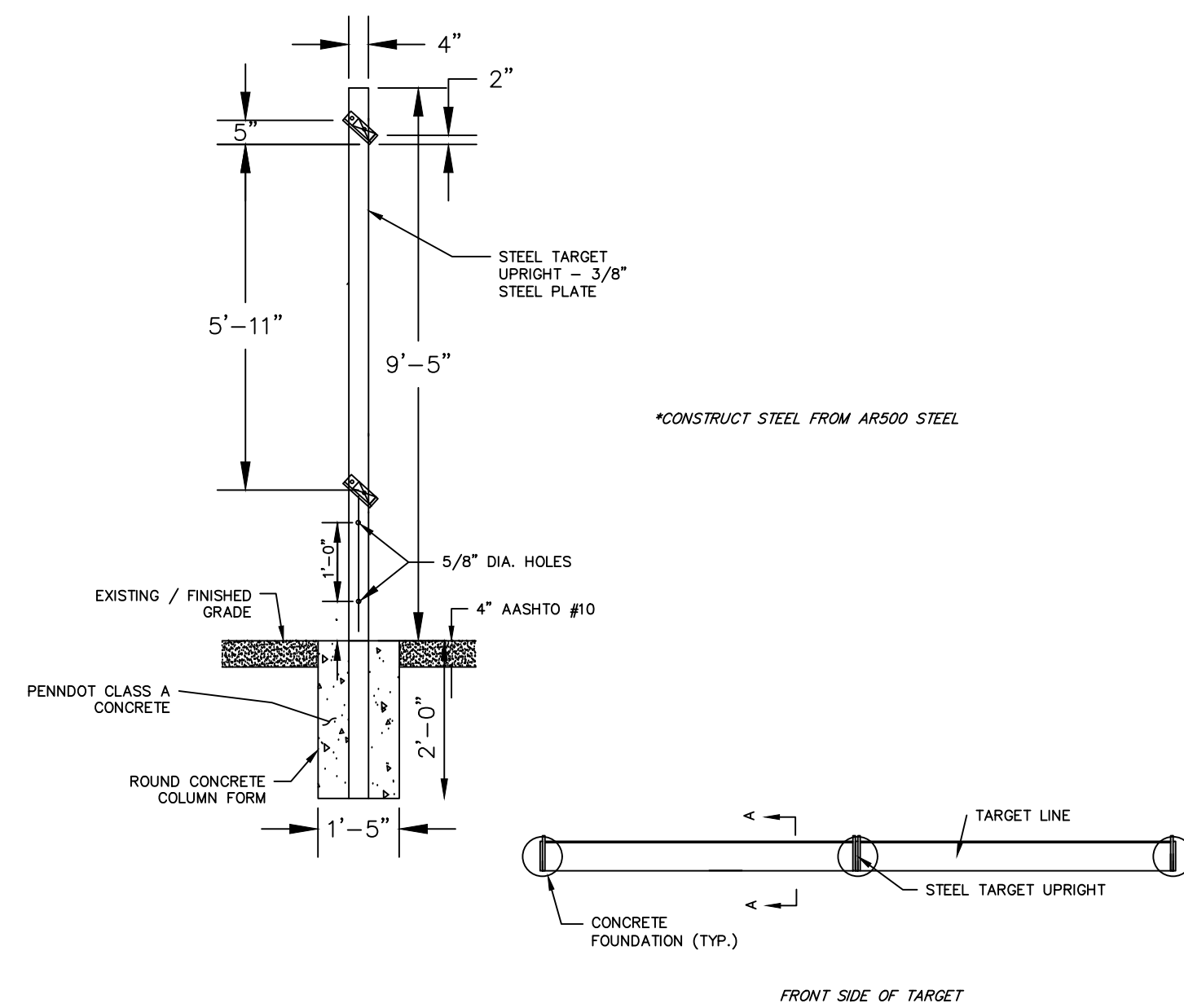
**FASTENER SCHEDULE - SHOOTING STATION SHELTER**

CONNECTION	PER CONNECTION
TRUSS SEATS TO POST	TWO 2" X 10" GALVANIZED CARRIAGE BOLTS OR (4) GRK RUGGED STRUCTURAL SCREWS 2X10S
TRUSSES TO TRUSS SEATS**	SIMPSON STRONG-TIE H12 HURRICANE TIE (2-MAX) w/ 8d GALVANIZED NAILS
PURLINS TO TRUSSES (TOP CHORD)	(3) 3" X .131 RING SHANK, HOT DIPPED GALVANIZED NAILS
FASCIA BOARD TO TRUSS ENDS	(3) 3" X .131 RING SHANK, HOT DIPPED GALVANIZED NAILS
2"x4" LONGITUDINAL BRACE TO TRUSS LOWER CHORD	(3) 3" X .131 RING SHANK, HOT DIPPED GALVANIZED NAILS
2"x4" DIAGONAL PORTAL BRACE TO TRUSS UPPER CHORDS	(3) 3" X .131 RING SHANK, HOT DIPPED GALVANIZED NAILS
2"x4" LONGITUDINAL TOP AND BOTTOM SHELF SUPPORTS TO POST OF HANGDOWN RANGE	(3) #10 - 3" SCREWS
2"x4" BRACE FROM SHELF TO POST	(3) #10 - 3" SCREWS
2"x12" SHELF TO 2"x4" SUPPORT	(8) #10 - 3" SCREWS
SHOOTING BENCH LEGS ATTACHMENT TO CONCRETE SLAB	(4) 3/8" X 3" GALVANIZED LDT TAPCON (PER BENCH)

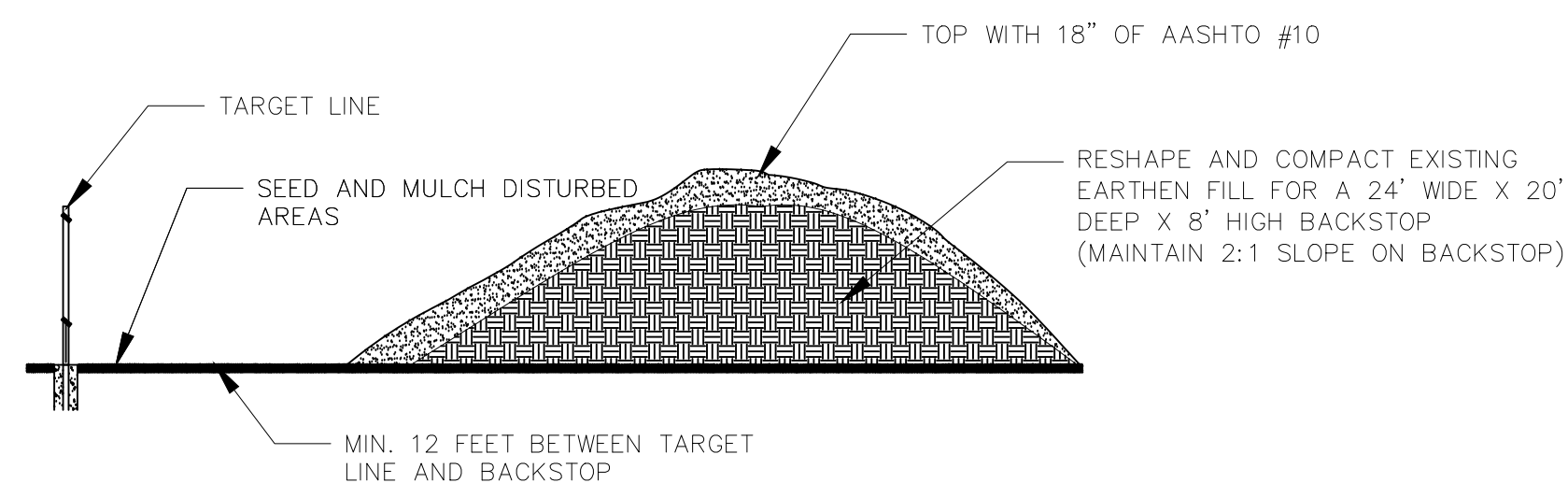
\*\* TRUSSES MAY ALSO BE CONNECTED TO THE TRUSS SEATS WITH 2"x6" SCRAPS ON (1) SIDE OF TRUSSES WHEN NOT POSITIONED ASIDE OF A COLUMN POST. PROVIDE (3) - 3" X .131 RING SHANK, HOT DIPPED GALVANIZED NAILS PER SIDE PER CONNECTION.



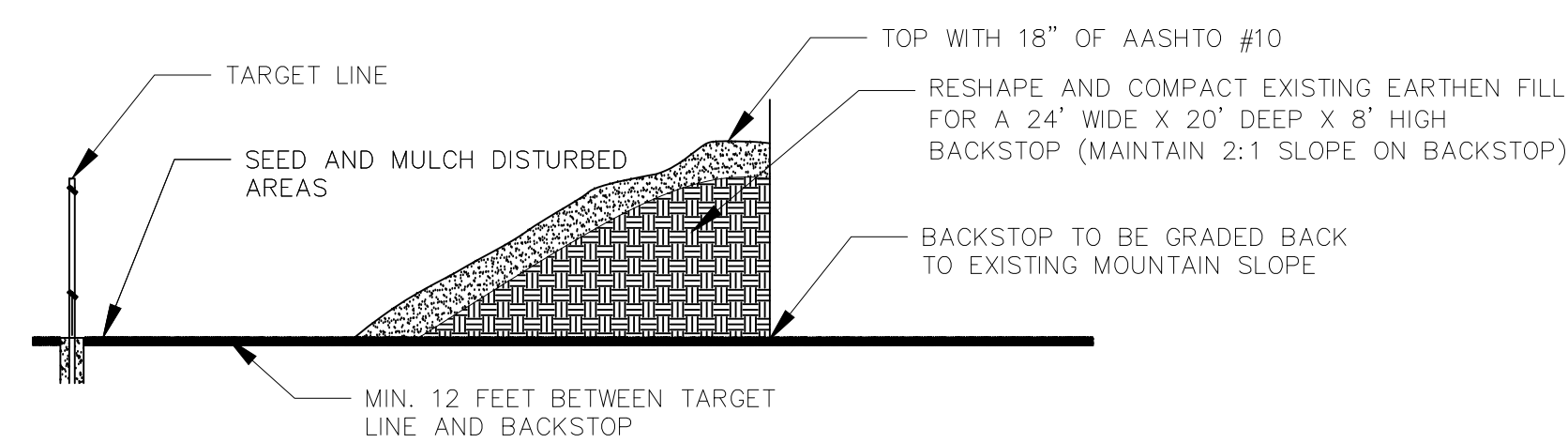
**C-2 TYPICAL SHELTER END GABLE ELEVATION**  
3/8 IN. = 1 FT.



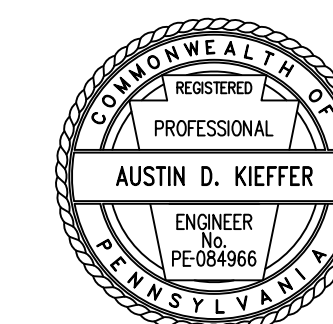
**C-5 TARGET HOLDER TYPICAL DETAILS**  
1/2 IN. = 1 FT.



**C-3 BACKSTOP DETAIL AT 50 YD RIFLE RANGE**  
1/8 IN. = 1 FT.

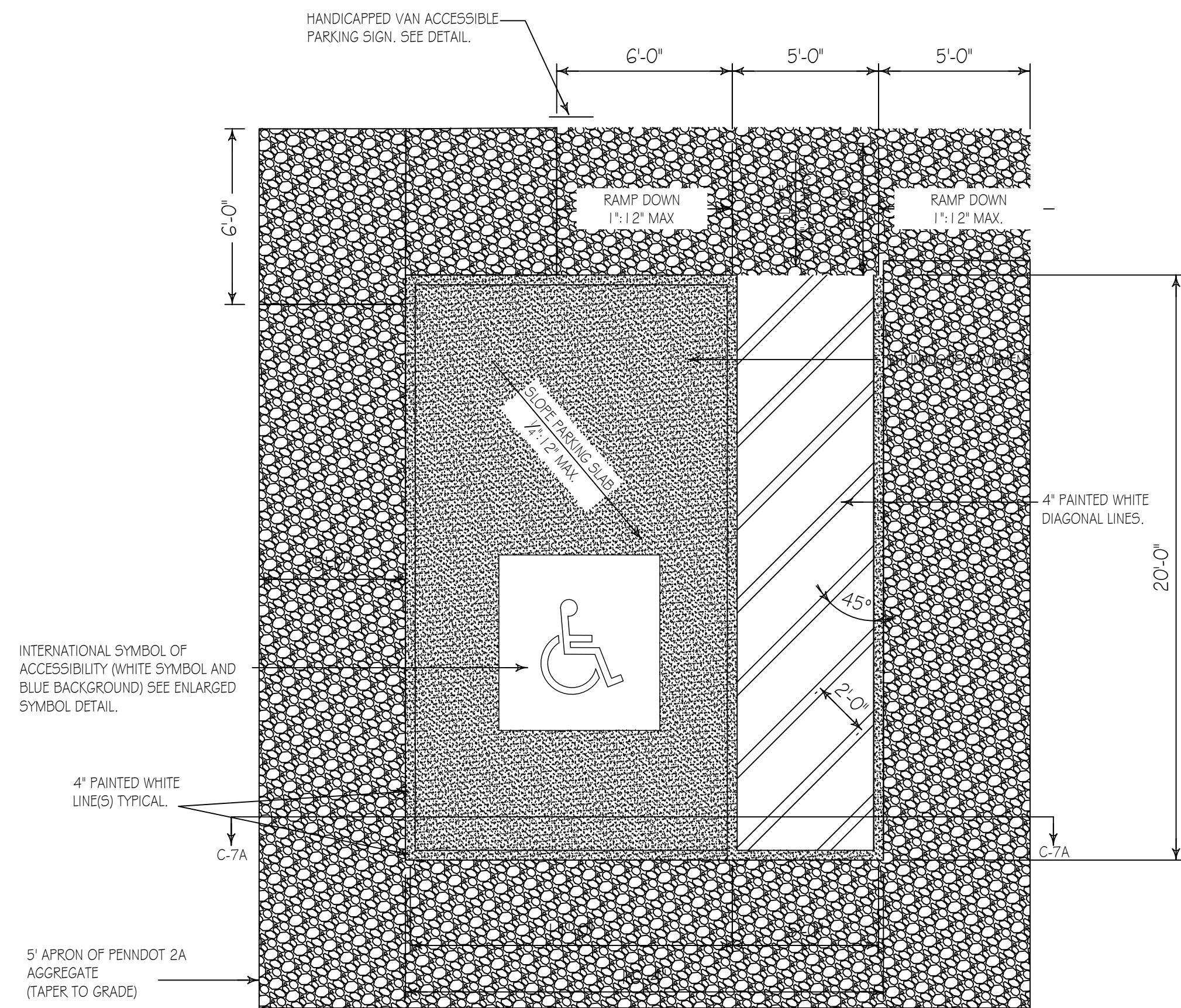


**C-6 BACKSTOP DETAIL AT 100 YD RIFLE RANGE & PISTOL RANGE**  
1/8 IN. = 1 FT.

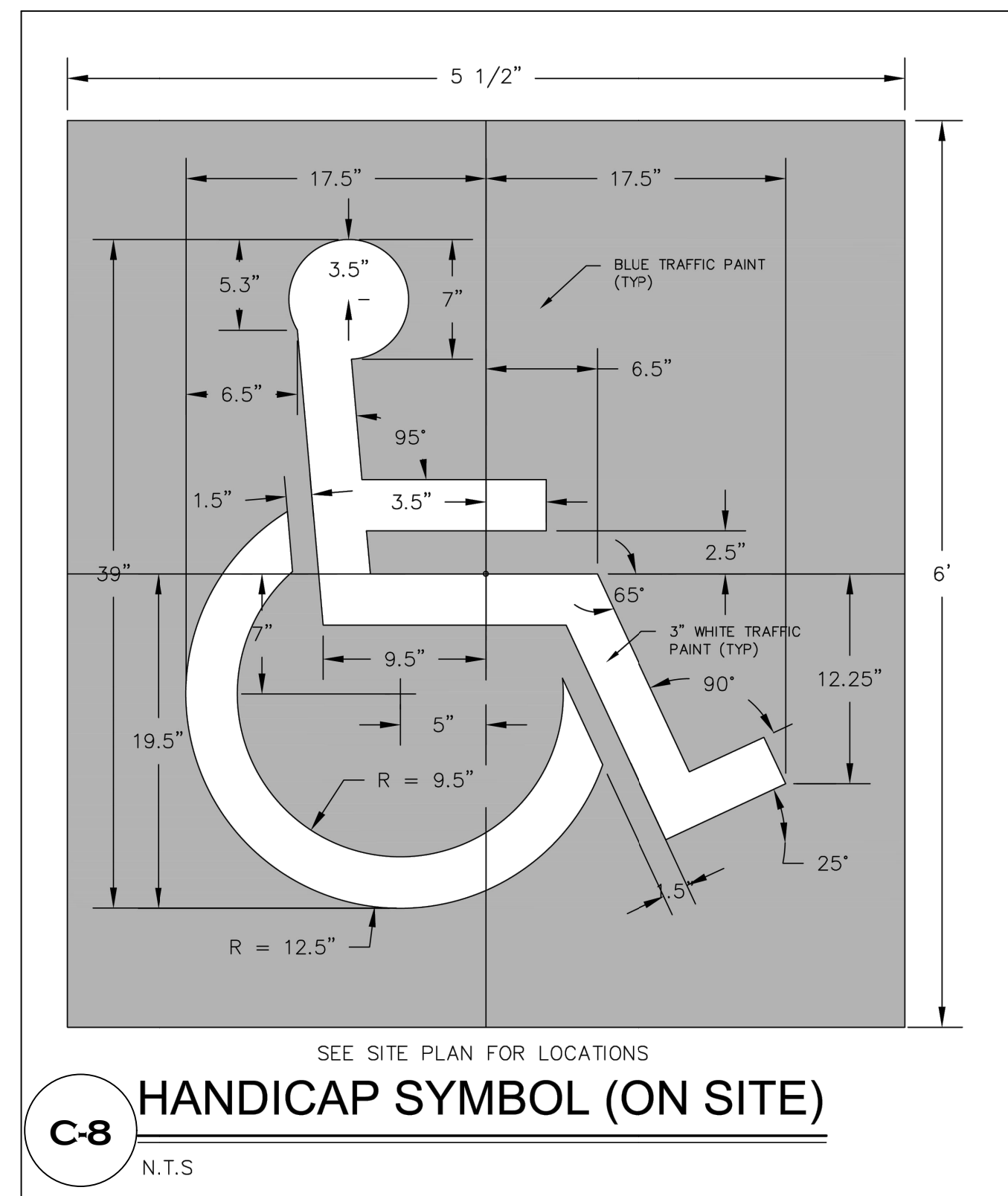


**PENNSYLVANIA GAME COMMISSION**

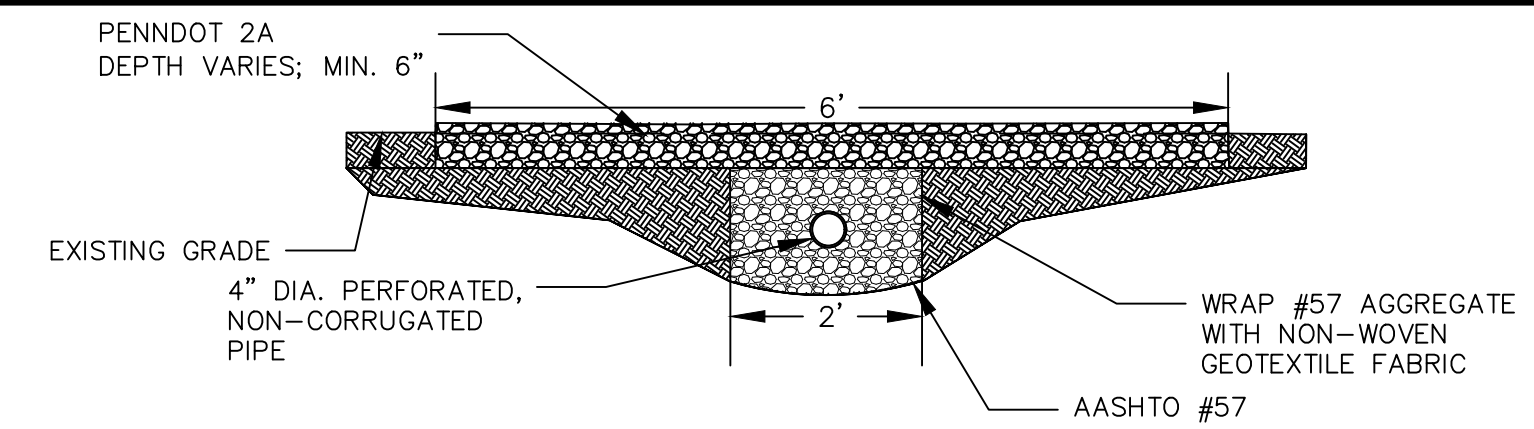
STATE GAME LANDS #159	LEBANON TWP	WAYNE CO.
SHOOTING RANGE IMPROVEMENTS		
DETAILS		
REVISIONS	PROJECT NO.	PGC-159-22-1
▲	DRAWN BY:	ACL
▲	DATE:	12/08/2022
▲	SHEET NO.	4 OF 5



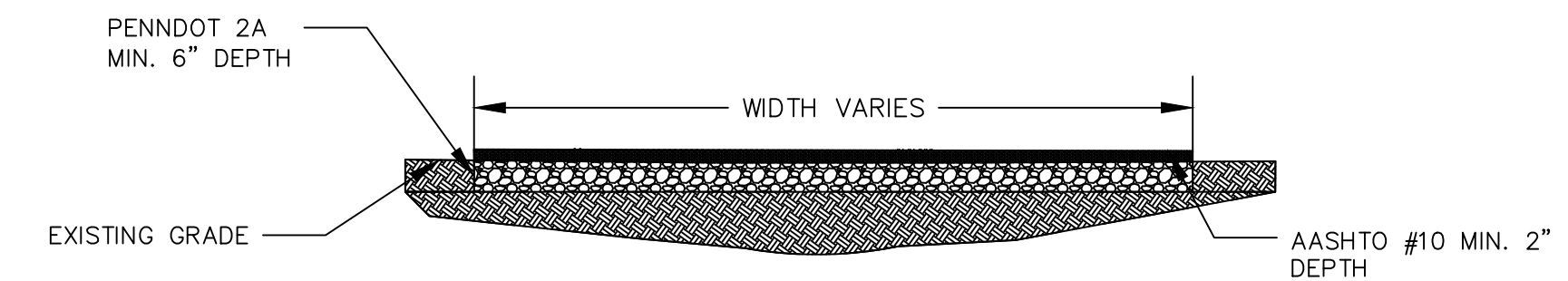
**C-7** HANDICAPPED PARKING STALL LAYOUT  
SCALE: 1/4" = 1'-0"



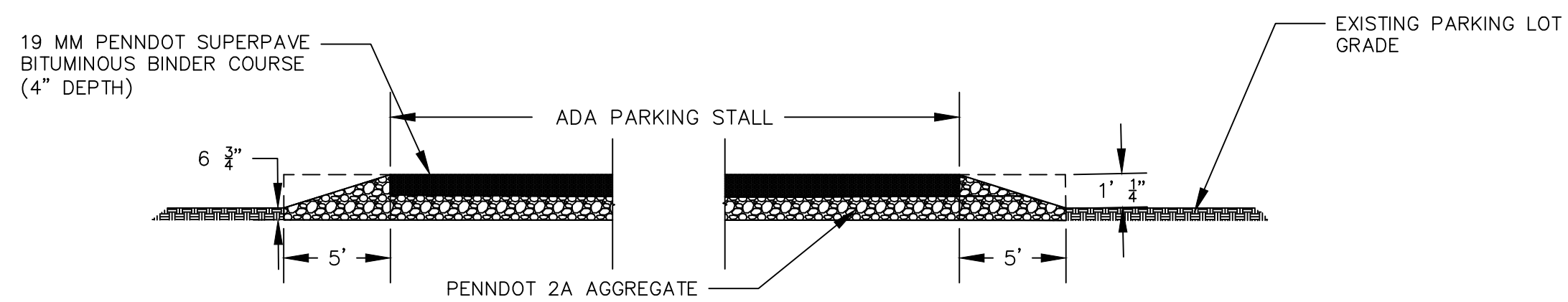
SEE SITE PLAN FOR LOCATIONS  
**C-8** HANDICAP SYMBOL (ON SITE)  
N.T.S.



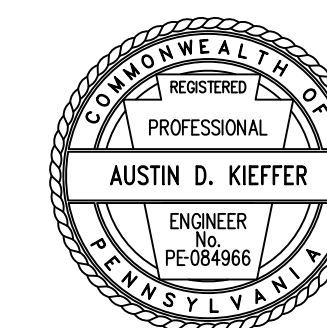
**TYPICAL FRENCH DRAIN WITH WALKWAY DETAIL**  
**SECTION C-C**  
**C-9** 1/2 IN. = 1 FT.



**TYPICAL WALKWAY DETAIL**  
**SECTION D-D**  
**C-10** 1/2 IN. = 1 FT.



**C-7A** HANDICAPPED PARKING STALL SECTION  
NTS



PENNSYLVANIA GAME COMMISSION		
STATE GAME LANDS #159	LEBANON TWP	WAYNE CO.
SHOOTING RANGE IMPROVEMENTS		
DETAILS CONT		
REVISIONS	PROJECT NO.	PGC-159-22-1
▲	DRAWN BY:	ACL
▲	DATE:	12/08/2022
▲	SHEET NO.	5 OF 5